

---

*STR-712 Industrial Tablet PC, 7in. LCD Touch-screen with capacitive resistance, 1280x800 pixels with high brightness for day light use.*

*Developed for heavy use withstanding extreme temperatures, vibrations from engines and road conditions, dusts and water (rain).*

*Rugged silicone shell absorbs impacts from drops up to 1.2m, better grip on handling.*

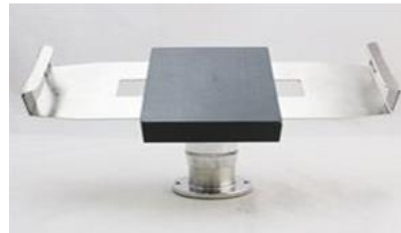
*Heavy-duty dual cup suction holder with magnetic attachment. (up to 20lbs. force) for on-board use.*

---



Specifications	
Operational	Android 5.1 OS
CPU	MSM8916, Cortex A53, Quad core CPU, 1.2GHz
RAM	RAM: 2G
	FLASH: 16G
Storage	MicroSD, Max. 64GB
USB	5 pin MicroUSB; suporte OTG (U-disk / Mouse/Keyboard / USB Ethernet cable)
Sim Card	Suporta chips 4G / 3G
OTG	Suporta, OTG can meet 100Mbps network port, web browsing.
	Recarga 2.5mm, headphone 3.5mm
Grades of Protection	
Industrial Protection Grade	IP65 water-proof class:5 Poeira:6
Drop	1.2m @ 26 times
Certification	MIL-STE-810G
	CE / RoHS / Anatel
Wireless	
Bluetooth	4.0
GPS	GPS, DBS, GLONASS
WIFI	IEEE 802.11b/g/n
4G	2G:GSM 900/1800/1900 B2/B3/B8 3G:WCDMA: 850/1900/2100 B1/B2/B5 4G:LTE_ FDD: 1800/2100/2600 B1/B3/B7
Data Collection	
Fingerprint	Type: TCSIST Sensor: capacitive Aquisition: 24.5*19mm Effective image size:15.5*18.5mm Image size: 256*360 Resolution: 500 DPI
Infra Red	Working Frequency 37.9K
Barcode Scanning	<b>1D Infrared Scanner Index:</b> Scanning speed: 50 times/second Scanning distance: 5.7cm-61.0cm Scanning angle: 53.3° ±3°
	<b>1D Laser Scanner Index:</b> Scanning speed: 104 times/second+12 times/second (two way scanning) Scanning distance: 2.5cm-114.3cm Scanning angle: 47±3°(default) /35±3°(reduced code)
	<b>2D Barcode Scanner Index:</b> Identification ability: 1D, 2D, OCR Scanning angle: rotate 360°, incline±50°, deflection ±50° Field of View: Horizontal 36°, vertical 23°

	Depth of field: 4cm-23.5cm Environmental luminance: 0~100,000 LUX
RFID	<b>LF RFID:</b> 134KHZ LF RFID or 124KHZ LF RFID
	<b>NFC (HF) RFID:</b> Working frequency: 13.56MHZ Profile: Support ISO/IEC 15693, ISO/IEC 14443A profile Support Cards: SR176, SR1X4K (TYPE-B), I- Code2, TI RFID label-it HF-I, EM4034, Mifare Classic ETC Identification distance: not more than 5cm
	<b>UHF RFID:</b> Working frequency: 840-960MHz(customization of required frequency band) Support agreement: EPC C1 GEN2/ISO 18000-6C Output power: 10dBm-30dBm Identification distance: not more than 6m
Screen	7 pol LCD capacitivo sensível ao toque, 1280x800 IPS
Keyboard	Android menu, Homepage, Return, Volume, Barcode, ON/OFF, Reset
Cameras	2 mega pixel frontal, 8 mega pixels traseira com foco automatico
LED indicators	Yes
Flashlight Function	Yes
Gravity sensor	Yes
Compass	Yes
Vibrating motor	Yes
FM	Yes
Rechargeable battery Lithium-Ion	3.7V, 7000mAh
Standby	Less than 10mA
Dimensions	209mm * 139mm * 19mm
Weight	1300 g



## Cartoon Box

NO.	Item	Marks
1	STR712 Industrial TABLET PC	STD
2	Charger	STD
3	USB Cable	STD
4	User Manual	STD
5	Handbelt	Optional
6	Earphone	Optional
7	OTG line	Optional
8	USB-RJ45 connector	Optional

INFORMATION

SKU	Module Code	Tipo
<b>Standard</b>		
GSM/GPRS/EDGE WCDMA/HSDPA/HSUPA	W	FDD-LTE: 1800/2100/2600 B1/B3/B7
<b>Optional Modulos Opcionais</b>		
Barcode Scanning	R	CCD Barcode Scanning, Motorola SE655
	J	1D Laser Barcode Scanning, Motorola SE955 or Honeywell N4313
	2	2D Barcode Scanning include PDF417 QR code and so on
LF RFID	4	LF 134KHZ
	5	LF 125KHZ
NFC RFID	H	HF RFID 13.56Mhz
UHF RFID	1	UHF (902MHZ-928MHZ, 0.5m)
	3	UHF (902MHZ-928MHZ, 2m)
	M	UHF (902MHZ-928MHZ, 4m)
	O	UHF (865-868MHX, about 2m)
	E	UHF(865-868MHX, about 4m)
GPS	G	GPS Locating Module
	S	High Precise GPS Locating Module
Fingerprint	F	Fingerprint Module