

Desenvolvido para aplicações de uso intenso em condições ambientais extremas de temperatura, vibração, poeira e a prova d'água.

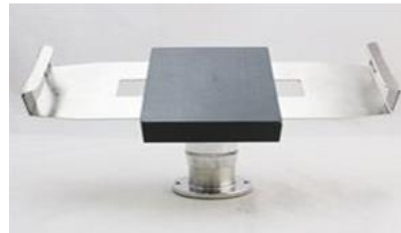
O Tablet Industrial STR-712 com tela de LCD capacitiva de 7 polegadas possui brilho suficiente para utilização diurna e resolução de 1280x800 pixels.

O frame de silicone absorve choques e quedas além de ser indicado ao manuseio. Conectado ao suporte de dupla ventosa por potentes imãs (10kg) têm garantida a estabilidade em uso veicular.



| Especificações | |
|-----------------------------|--|
| Sistema Operacional | Android 5.1 OS |
| CPU | MSM8916, Cortex A53, Quad core CPU, 1.2GHz |
| RAM | RAM: 2G |
| | FLASH: 16G |
| Armazenamento | MicroSD, Max. 64GB |
| USB | 5 pin MicroUSB; suporte OTG (U-disk / Mouse/Keyboard / USB Ethernet cable) |
| Sim Card | Suporta chips 4G / 3G |
| OTG | Suporta, OTG can meet 100Mbps network port, web browsing. |
| | Recarga 2.5mm, headphone 3.5mm |
| Proteção | |
| Industrial Protection Grade | IP65 a prova d'água class:5 Poeira:6 |
| Resistencia a queda | 1.2m @ 26 vezes |
| Certificação - Queda | MIL-STE-810G |
| Certificados | CE / RoHS / Anatel |
| Wireless | |
| Bluetooth | 4.0 |
| GPS | GPS, DBS, GLONASS |
| WIFI | IEEE 802.11b/g/n |
| 4G | 2G:GSM 900/1800/1900 B2/B3/B8 3G:WCDMA: 850/1900/2100 B1/B2/B5 4G:LTE_ FDD: 1800/2100/2600 B1/B3/B7 |
| Coleta de Dados | |
| Fingerprint | Tipo: TCSIST Sensor: capacitivo Aquisição: 24.5*19mm Effective image size:15.5*18.5mm Image size: 256*360 Resolução: 500 DPI |
| Infra Vermelho | Working Frequencia 37.9K |
| Barcode Scanning | 1D Infrared Scanner Index: Scanning speed: 50 times/second Scanning distance: 5.7cm-61.0cm Scanning angle: 53.3° ±3° |
| | 1D Laser Scanner Index: Scanning speed: 104 times/second+12 times/second (two way scanning) Scanning distance: 2.5cm-114.3cm Scanning angle: 47±3°(default) /35±3°(reduced code) |
| | 2D Barcode Scanner Index: Identification ability: 1D, 2D, OCR Scanning angle: rotate 360°, incline±50°, deflection ±50° Field of View: Horizontal 36°, vertical 23° |

| | |
|-------------------------------------|--|
| | Depth of field: 4cm-23.5cm Environmental luminance: 0~100,000 LUX |
| RFID | LF RFID: 134KHZ LF RFID or 124KHZ LF RFID |
| | NFC (HF) RFID: Working frequency: 13.56MHZ Profile: Support ISO/IEC 15693, ISO/IEC 14443A profile Support Cards: SR176, SR1X4K (TYPE-B), I- Code2, TI RFID label-it HF-I, EM4034, Mifare Classic ETC Identification distance: not more than 5cm |
| | UHF RFID: Working frequency: 840-960MHz(customization of required frequency band) Support agreement: EPC C1 GEN2/ISO 18000-6C Output power: 10dBm-30dBm Identification distance: not more than 6m |
| Características Físicas | |
| Tela | 7 pol LCD capacitivo sensível ao toque, 1280x800 IPS |
| Teclado | Android menu, Homepage, Return, Volume, Barcode, ON/OFF, Reset |
| Cameras | 2 mega pixel frontal, 8 mega pixels traseira com foco automatico |
| LED indicadores | Sim |
| Flashlight Function | Sim |
| Gravity sensor | Sim |
| Compass | Sim |
| Vibrating motor | Sim |
| FM | Sim |
| Bateria Recarregavel Lithium-Ion | 3.7V, 7000mAh |
| Standby | Menos de 10mA |
| Dimensões | 209mm * 139mm * 19mm |
| Pêso | 1300 g |



CONTEÚDO DA EMBALAGEM

| NO. | Item | Marks |
|-----|--------------------------------|----------|
| 1 | STR712 Industrial TABLET PC | STD |
| 2 | Charger | STD |
| 3 | USB Cable | STD |
| 4 | User Manual | STD |
| 5 | Handbelt | Optional |
| 6 | Earphone | Optional |
| 7 | OTG line | Optional |
| 8 | USB-RJ45 connector | Optional |

INFORMATION

| SKU | Module Code | Tipo |
|------------------------------------|-------------|--|
| Standard | | |
| GSM/GPRS/EDGE WCDMA/HSDPA/HSUPA | W | FDD-LTE: 1800/2100/2600 B1/B3/B7 |
| Optional Modulos Opcionais | | |
| Barcode Scanning | R | CCD Barcode Scanning, Motorola SE655 |
| | J | 1D Laser Barcode Scanning, Motorola SE955 or Honeywell N4313 |
| | 2 | 2D Barcode Scanning include PDF417 QR code and so on |
| LF RFID | 4 | LF 134KHZ |
| | 5 | LF 125KHZ |
| NFC RFID | H | HF RFID 13.56Mhz |
| UHF RFID | 1 | UHF (902MHZ-928MHZ, 0.5m) |
| | 3 | UHF (902MHZ-928MHZ, 2m) |
| | M | UHF (902MHZ-928MHZ, 4m) |
| | O | UHF (865-868MHX, about 2m) |
| | E | UHF(865-868MHX, about 4m) |
| GPS | G | GPS Locating Module |
| | S | High Precise GPS Locating Module |
| Fingerprint | F | Fingerprint Module |